

TIB ACADEMY

TRAINING IN BANGALORE

DELIVERING THE BETTER TRAINING

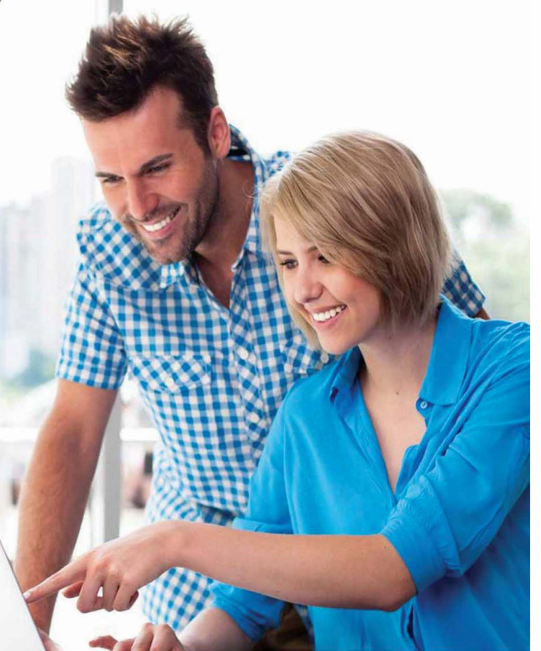


Flexible, Affordable, Accessible service.



CALL US

+91 9513332301



TIB ACADEMY'S SERVICE FEATURE



Affordable Fees

We provide quality training with lowest price. This opportunity is available only at TIB Academy.



Experienced Trainers

Learn technology with a experienced professional who have expertise in their particular technology.



Flexible Timings

We believe that everyone should get the opportunity to learn their desired course. So we provide flexibility timings.



Quick Contact



Second Floor and Third Floor, 5/3 BEML Layout, Varathur Main Road, Kundalahalli Gate, Bengaluru, Karnataka 560066

www.traininginbangalore.com



info@tibacademy.com



+91 9513332306



Salesforce Admin Training Course Syllabus

- What is Cloud Computing
- Advantages
- Layers – Client, Application(Software as a Service (SaaS)), Platform (platform as a service (PaaS)), InfraStructure(infrastructure as a service” (IaaS)), Server
- Deployment Models – Public cloudm Community Cloud, Hybrid Cloud, Private Cloud

Introduction to Salesforce Admin

- What is Salesforce Admin.com
- Advantages
- Products and Services
- Customer Relationship Management(CRM) – Salesforce Admin CRM and other CRM
- The Sales Cloud
- The Service Cloud
- Force.com Platform
- Chatter
- AppExchange
- Configuration
- Web services
- Mobile support





Introduction to Force.com Platform

- Registering Developer Edition with Salesforce Admin.com
- Standard applications
- Standard Tabs
- Standard Objects and relationships, Links
- Setup page – Personal Setup, Application Setup and Administration Setup

Personal Setup

- Personal Information
- Change Password
- Reset my security Token
- Change My Display
- Grant Login Access
- Calendar Access
- Reminders
- Email Settings

Designing Applications on Force.com – I

- Creating new application
- Creating Custom objects
- Creating Tabs – Custom Tabs, Web tabs
- Adding text ,Currency,Checkbox,Date fields
- Creating Picklists • Field Dependencies





Designing Applications on Force.com – II

- Encrypted fields, field help, and field history tracking
- Use master detail, lookup, and many-to-many Relationships
- Custom button and links Creation
- Rollup Summary field

Designing Applications on Force.com – III

- Develop custom formulas
- Use the vlookup, regex, ischanged, isnew, and priorvalue functions to build business processes
- Validation Rules – Creating rule by applying formulas
- Payelayouts – Payelayout Editor, Grouping fields into New Section, adding spece between Fields, Editing Field properties
- Search Layouts

Designing Applications on Force.com – IV

- Workflows o Introducing Workflow Rules and work flow actions Email Alerts – Email templates Tasks Field Updates – Queues and Time Dependent Workflow Actions
- Designing Applications on Force.com – V
- Creating an approval Process
- Create an Email template for approvals
- Create an Approval Process





- Create a Custom Profile
- Create User
- Test the Approval Process

Reports

- Introducing Reports and Custom Reports
- Create a tabular Report
- Create a Summary Report – Adding Summary fields and adding Columns and Filters
- Create Matrix Report
- Exporting Reports
- Dashboards – Creating and Editing Dashboards, Adding Dashboard Snap Shots to Home Page, Creating Additional Reports
- Creating Custom Report Types

Sharing and Security data – I

- Creating User Accounts
- Controlling Access to Data
- Controlling Access to Objects
- Introducing Profiles o Standard Profiles o Custom Profiles
- Controlling Access to Fields o Introducing Filed Level Security
- Accessing Field-Level Security Settings





Sharing and Security data – II

- Controlling Access to Records
- Introducing Organization-Wide Defaults
- Introducing Role Hierarchies
- Company Roles and Profiles
- Sharing Rules
- Manual Sharing

Sharing and Security data – III

- Displaying Field values and Page Layouts according to Profiles –
- Overriding Sharing with Object Level Permissions
- Administration Groups – Managing Groups(Public and Personal)

Sharing and Security data – IV

- Login History
- Password Policies
- User session Settings
- Set Trusted Ip range

Administration Setup – Mobile, Desktop and Email administration

- Mobile Administration:
- Configuring Mobile user





- Configuring Mobile user
- User Settings

Desktop Administration

- Configuring for outlook
- Offline Briefcase configuration

Email Administration

- Testing Deliverability
- Deliverability Settings
- Setting Organization-Wide addresses
- Compliance BCC
- Setting Enail Footers

Company Profile and Monitoring

- Editing Company Information
- Settings Fiscal Year
- Settings Business Hours and Holis
- Language Settings
- Debug Logs
- Email Log files





Managing data – I

- Importing data to Salesforce Admin.com from external Sources

- Import Custom objects
- Data Export
- Mass Transfer Records
- Mass Delete Records
- Mass Transfer Approval
- Mass Update addresses

Managing data – II

- Data Loader
- Data loader Overview
- When to use Data Loader
- Installing and Configuring Data Loader
- Use Data Loader to create mapping files and upsert data
- Running Batch Processes
- Command Line Quick start
- Dataloader.io





Cloud Computing Overview & Architecture

- Introducing the Force.com IDE
- Installation
- Force.com Perspective
- Force.com Projects
- Problems view
- Schema Explorer
- Apex Test Runner View
- Execute Anonymous View

Apex & Visualforce

- Apex Trigger
- Apex Classes
- Visual force Pages
- Developer console
- SOQL
- SOSL
- Debugging
- System Log

Apex Triggers

- Trigger Events
- Bulk Trigger





Apex Programming

- Introduction to Apex
- Language Constructs
- Classes, Objects, and Interfaces
- Dynamic Apex
- Batch Apex
- SOQL & SOSL
- Debugging
- Writing Apex Classes as Web Services
- Invoking Callouts Using Apex
- Deploying Apex
- Test Class

Visualforce Development

- Introduction
- Standard Controllers
- Standard List Controllers
- Controllers and Controller Extensions
- Overriding Buttons, Links, and Tabs with Visual force
- Components
- Dynamic Visualforce Bindings & Components
- Integrating Email with Visual force
- Visual force Charting





Integration – I

Force.com Integration Solutions

- Outbound Messaging
- Salesforce Developer-to-Salesforce Developer(S2S)

Developing Custom Integration

- Calling Web service from apex code
- Using HTTP Integration

Integration – II

- Understanding Force.com Web services
- Basics of Force.com web service
- Generating the web Service Client
- Login in
- Force.com Datatypes in SOAP
- Error Handling

* Syllabus can be modified based on your Requirement

For More Visit :

<https://www.traininginbangalore.com/salesforce-developer-training-in-bangalore/>

